

# RENEWABLE ENERGY SOLUTIONS

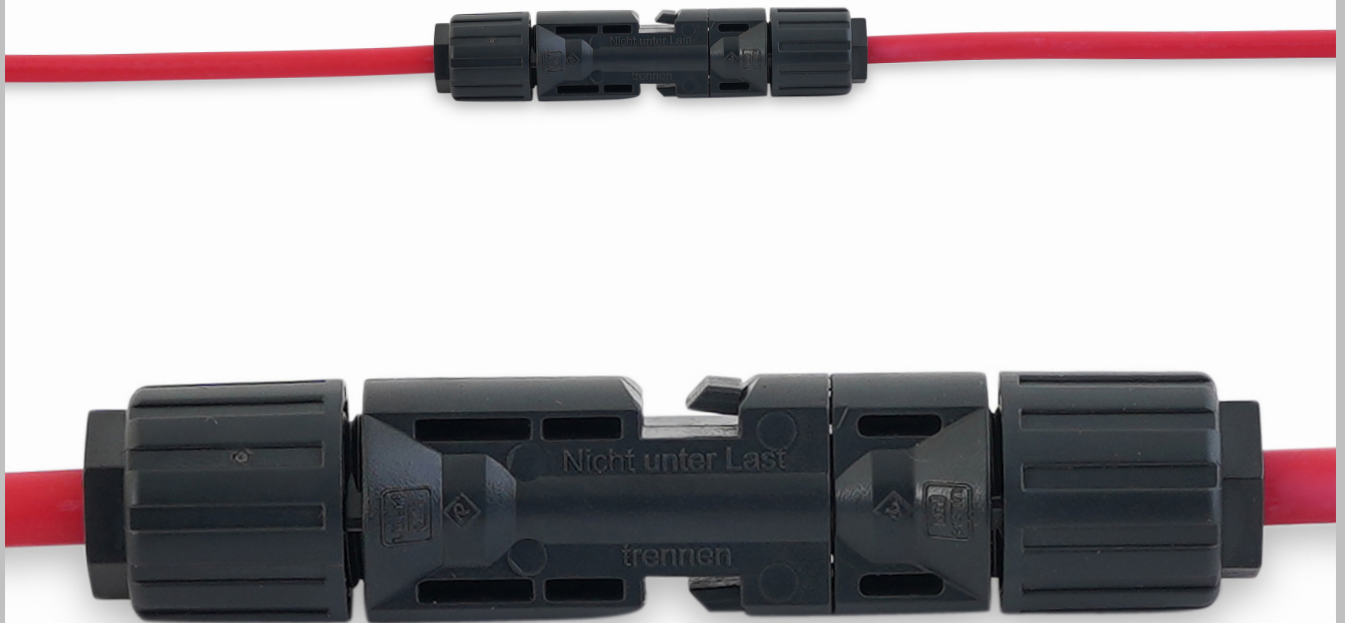


PARADIGMA SOLAR  
CABLE COUPLER  
(PSCC) with barrel  
crimp contacts

PSCC Female and male cable coupler

Female and male cable coupler as  
individual part with barrel crimp  
contacts (including insulating part)

# SOLAR PHOTOVOLTAIC SYSTEMS RENEWABLE ENERGY SOLUTIONS



PARADIGMA SOLAR  
CABLE COUPLER  
(PSCC) with barrel  
crimp contacts

PSCC Female and  
male cable coupler

Female and male cable  
coupler as individual part  
with barrel crimp contacts  
(including insulating part)

# PSCC – Female & Male Couplers

has very unique and exclusive Features :



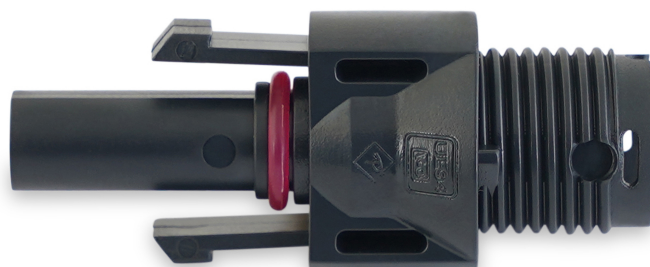
High Quality Terminals



High Quality Terminal Holder Rings



Fireproof and long-lasting gaskets





## PARADIGMA SOLAR CABLE COUPLER (PSCC)

## Technical SPECIFICATIONS

Technical data	NOMINAL VALUE UNIT	TEST METHOD
Connector system	Ø 4 mm	
Rated voltage	1500 V DC (UL) 1000 V DC (CSA)	Tested by 2250 V DC
Rated current UL	30 A (14 AWG) 35 A (12 AWG) 50 A (10 AWG) 70 A (8 AWG) 95 A (6 AWG)	ETI
Ambient temperature range	-40 °C ... +90 °C	
Dielectric Constant	2.90	IEC 60250
Degree of protection	IP68 (1 h/1 m) IP2X	
Overvoltage category/Pollution degree	CATIII/3	
Contact resistance of plug connectors	≤0.20 mΩ	
Heat Deflection Temperature (1.8 MPa, Unannealed)	106 °C	ISO 75-2/A
CLTE - Flow (-40 to 90°C)	7.0E-5 cm/cm/°C	ISO 11359-2
Safety class	1500 V DC: 0	
Contact system	multi-functional contact interface (MULTILAM)	
Type of termination	Crimp (barrel crimp)	
Contact material	Copper, tin plated	
Charpy Notched Impact Strength <sup>3</sup> (23°C)	46 kJ/m <sup>2</sup>	ISO 179
Insulation material	PPE	
Locking system (UL)		Locking type, requiring tool
Flammability	V-0	UL94
Ammonia resistance (acc. to DLG)	Yes	
Salt mist spray test, degree of severity 6	yes	
UL recognized component	E343181	in accordance with UL 6703
CSA certified	250725	in accordance with UL6703 (8 AWG)



## PARADIGMA SOLAR CABLE COUPLER High Quality Terminals

## SPECIFICATIONS

Technical Data	
Connector system	Φ2.5mm~6mm <span style="float: right;">Caption</span>
Rated voltage	1500V DC(IEC)1
Rated current	17A(1.5mm <sup>2</sup> ) 22A (2.5mm <sup>2</sup> ; 14AWG) 30A (4mm <sup>2</sup> ; 6mm <sup>2</sup> ; 12AWG, 10AWG)
Test voltage	6kV(50HZ, 1min.)
Ambient temperature range	-40°C... +90°C(IEC) -40°C... +75°C(UL)
Upper limiting temperature	+105°C(IEC)
Degree of protection, mate unmated	IP67 IP2X
Contact resistance of plug connectors	0.5mΩ
Safety class	II
Contact material	Messing, versant Copper Alloy, tin plated
Insulation material	PC/PPO
Locking system	Snap-in
Flame class	UL-94-V0
Salt mist spray test, degree of severity 5	IEC 60068-2-52

# PSCC – Female & Male Couplers

has very unique and exclusive Features :

\*High quality materials

\*Flawless production

\*Proven and reliable solar panel connection

\*Secure Plug - In lock

\*In accordance with NEC 2020, requires a tool to open and you don't need any special tools, it can be opened with a 13 size wrench! which is very unique on the market.

\*Proven MULTILAM technology with high long-term stability, which ensures consistently low performance loss throughout the entire service life of the plug connector

\*Tried and tested plug connectors, over millions around the world

\*Available for assembly with crosssections up to 6 AWG

\*Also available as ready made leads

\*Mating compatibility with the entire PSCC series

\*Leads made to customer's specifications

\*Available upon request

# Global presence of the Paradigma Group



Paradigma is a trademark of Paradigma Teknoloji Üretim ve Mühendislik A.S., registered in Turkey and other countries,

We reserve the right to modify product specifications without any prior notice.  
© Paradigma 2023.



# PARADİGMA TEKNOLOJİ ÜRETİM ve MÜHENDİSLİK ANONİM ŞİRKETİ

TESKOOP ÖZEL SANAYİ BÖLGESİ  
Deliklikaya Mahallesi  
Emirgan Caddesi No 1/L  
Arnavutköy – İSTANBUL



+90 (212) 813 12 53

[info@paradigmagrup.com](mailto:info@paradigmagrup.com)

[www.paradigmagrup.com](http://www.paradigmagrup.com)